

MONTHLY MEMBERSHIP PROGRESS REPORT

LOCATION NEW YORK

District 20 E2

Results as of: 11/30/2022

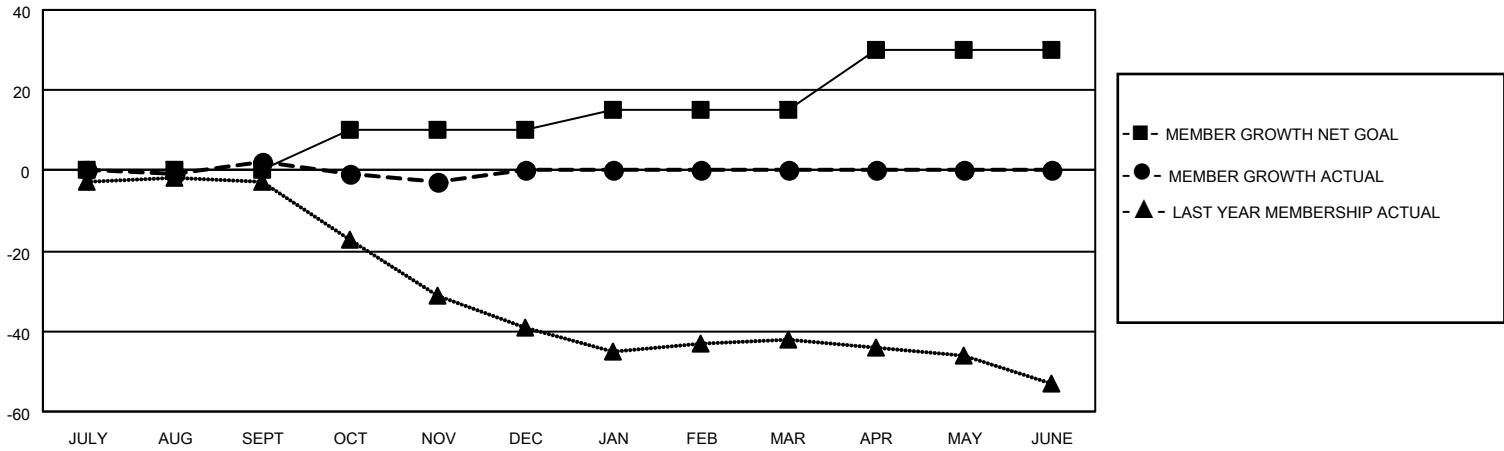
Clubs			
RESULTS FOR 2022-2023			
QUARTER	NEW CLUB GOAL	NEW CLUBS	DROPPED CLUBS
JULY/AUG/SEPT	0	0	0
OCT/NOV/DEC	0	0	0
JAN/FEB/MAR	1	0	0
APR/MAY/JUNE	0	0	0

Members			
RESULTS FOR 2022-2023			
QUARTER	MEMBER GROWTH NET GOAL	MEMBER GROWTH ACTUAL	DROPPED MEMBERS ACTUAL (including transfers)
JULY/AUG/SEPT	0	9	6
OCT/NOV/DEC	10	11	15
JAN/FEB/MAR	5	0	0
APR/MAY/JUNE	15	0	0

GOALS AND ACTUAL NEW CLUBS CUMULATIVE



GOALS AND ACTUAL MEMBERS CUMULATIVE



DROPPED CLUBS: 0	
<u>DROPPED MEMBERS</u>	
DECEASED	6
CLUB CANCELLED	0
OTHER	15
TOTAL	21

8 CLUBS OF 35 ADDED 1 OR MORE NEW MEMBERS

[CLICK HERE FOR CUMULATIVE MEMBERSHIP DATA](#)

<u>GENDER DISTRIBUTION</u>	
MALE	508 (61.43%)
FEMALE	319 (38.57%)
NON BINARY	0 (0.00%)
PREFER NOT TO ANSWER	0 (0.00%)
TOTAL FAMILY UNIT MEMBERS	
	153
FAMILY MEMBERS PAYING HALF DUES	
	78